



Geotech International Pty Ltd



PAUL W ASKINS
GEOLOGY

PAUL ASKINS
17 Browne St
Subiaco WA 6008
Tel +618 93821002
Mob +614 07712768
paskins@westnet.com.au

ROY HILL TIN & LITHIUM PROJECT

Greisen deposits, large systems, drill-ready targets.

The project is available on reasonable and flexible terms preferably via an option to purchase arrangement.

Location

Near the village of Avoca, Eastern Tasmania. 100km by road from the City of Launceston. The area is well serviced with roads, towns, water, electricity and a local work force. Much of the area is covered by private farming lands.

Exploration Licence:

EL2/2016 granted August 2016.

Size:- 28 sq km.

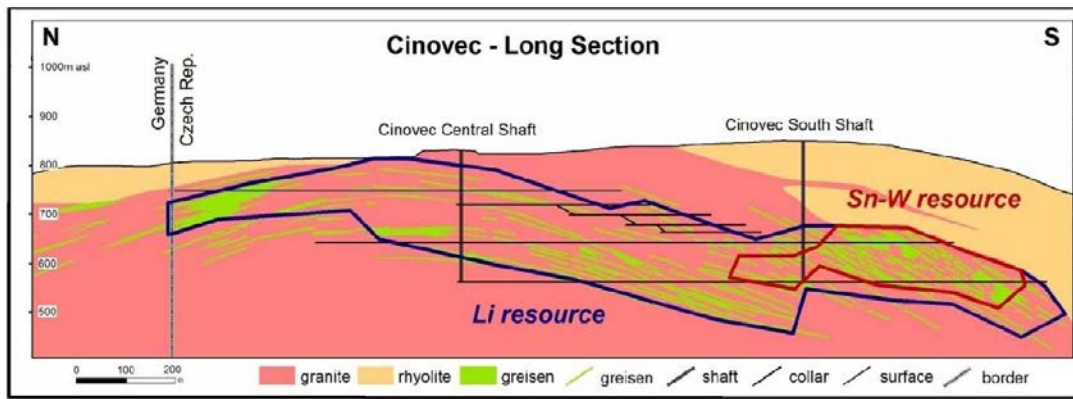
Expenditure Commitment:- \$22,000 for year to October 2020

No veto on mineral exploration over Private Land and no native title heritage agreement restrictions apply in Tasmania.

TWO MAIN TARGETS GENERATED TO DATE- NOW DRILL READY:-

1. Roy's Hill

- A Devonian greisen system at a granite carapace below the contact with Ordovician Mathinna Bed metasiltstones. Only partially exposed below thin Permian conglomerate.
- Partially worked in the past for tin (1890s to 1910s).
- Indications are that the system may be 150m wide and 1km long.
- Best grab sample at surface contained 1707ppm Li.
- Coarse black cassiterite was observed in some dump greisen samples
- No modern exploration and no drilling to date.
- Easy access for immediate drilling through open woodland.
- Analogy with the Cinovec deposit:- On the Czech Republic- German border, a quartz-topaz-zinnwaldite-cassiterite greisen occurs in the upper part of a cupola. Cinovec is an historic mine containing an undeveloped lithium inferred resource of 514.8Mt @ 0.43% Li₂O. Within this resource lies one of the largest undeveloped tin deposits in the world, with total indicated and inferred resource of 79.7Mt grading 0.23% Sn.



2. St Paul's Grid

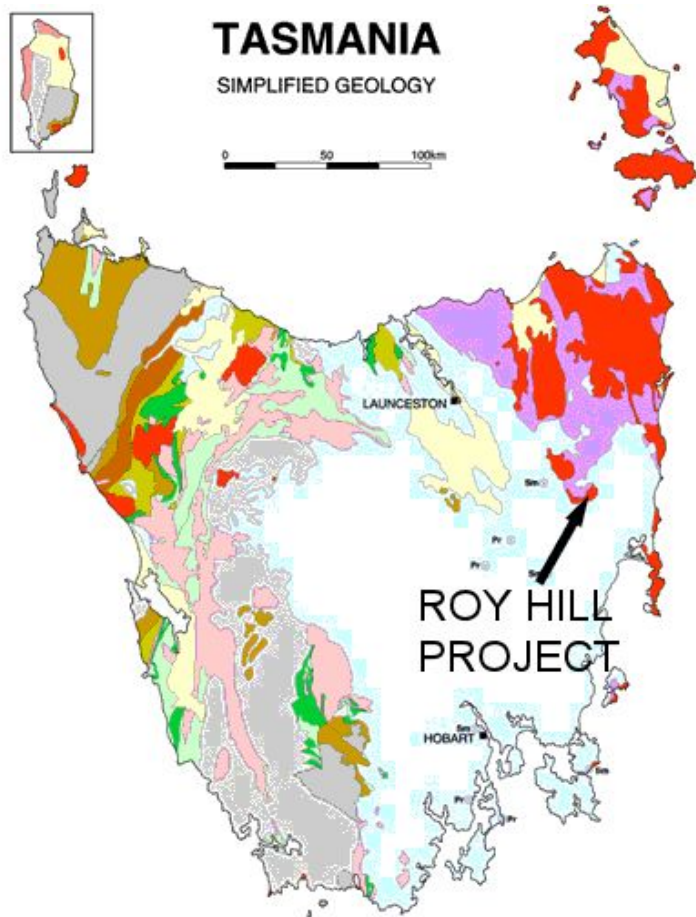
- Granite contact zone, showing similarities to the Royal George Deposit, (held by TNT Mines 3km to SE).
- Royal George is a large vertical greisen lode in granite; it was a past producer; the current Inferred JORC resource is 474,227t @ 0.25% Sn.
- Very large (1100 x 1100m) tin soil geochem anomaly at St Pauls Grid, (see sketch below), thus it is potentially much larger than Royal George
- Only 5 drill holes to date; these were not well sited to intersect a hidden vertical greisen target immediately below thin Mathinna bed metasediments.

HIGH REGIONAL PROSPECTIVITY

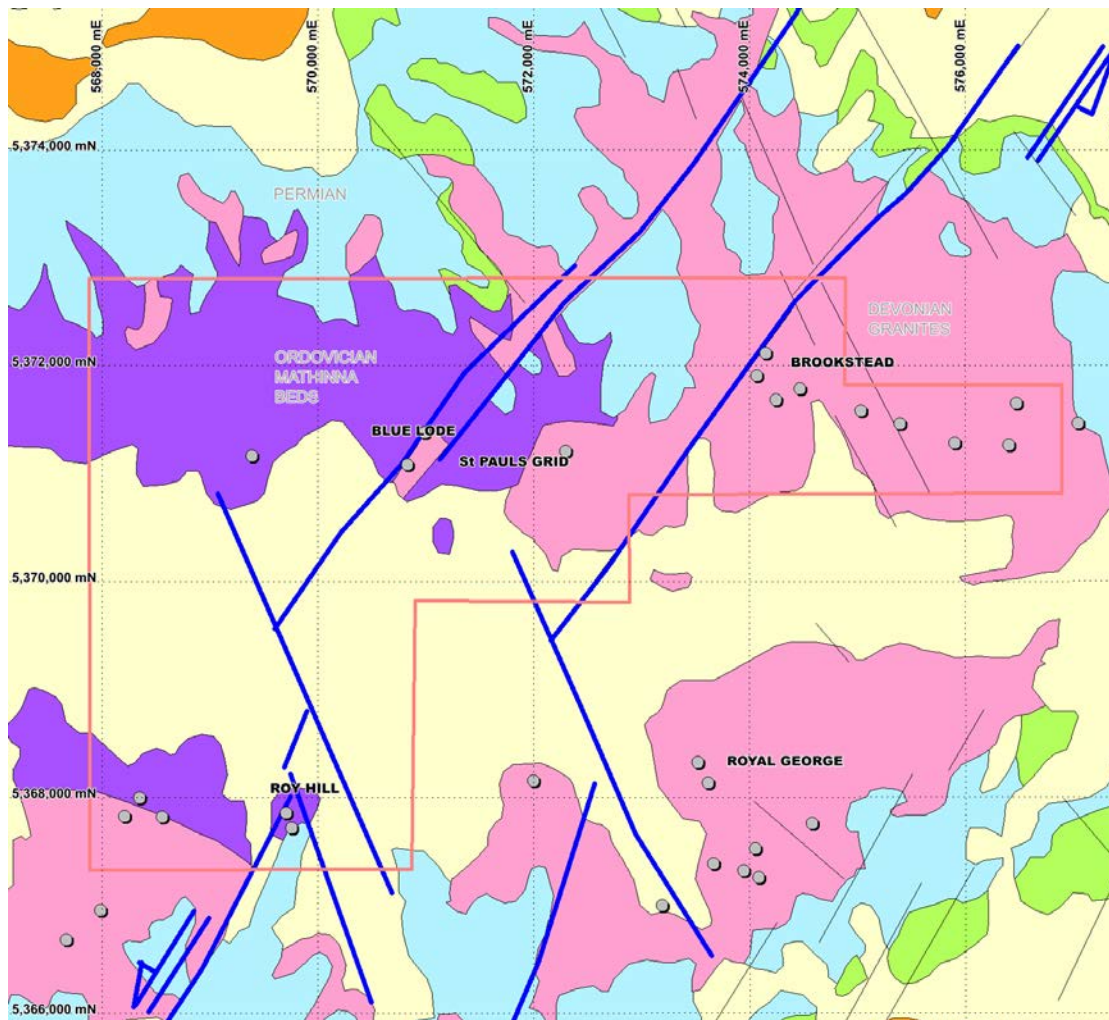
- This is a well mineralised past-producing tin province associated with apical zones of highly fractionated Devonian granite.
- Very underexplored for tin.
- Extensive tin anomalism in stream sediment and soil surveys suggests many vein systems and greisens are yet to be discovered, especially near the granite roof.

Paul Askins, Managing Director of Geotech International Pty Ltd, is a geologist who has held senior management positions with major exploration and mining companies, and has over 45 years' experience in mineral exploration for a broad range of commodities in Australia and overseas. He has strengths in all phases of exploration from administration, strategy, aggressive and innovative prospect selection, target generation, field and office assessments, through to feasibility studies. He enjoys innovative prospect and target generation, using lateral thinking at all scales from regional to detailed prospect scale. He is an ore finder, and is proud to have been Western Australian Exploration Manager for Billiton (Shell Metals) when his team discovered the multi-mineral ounce Sunrise Dam gold deposit.

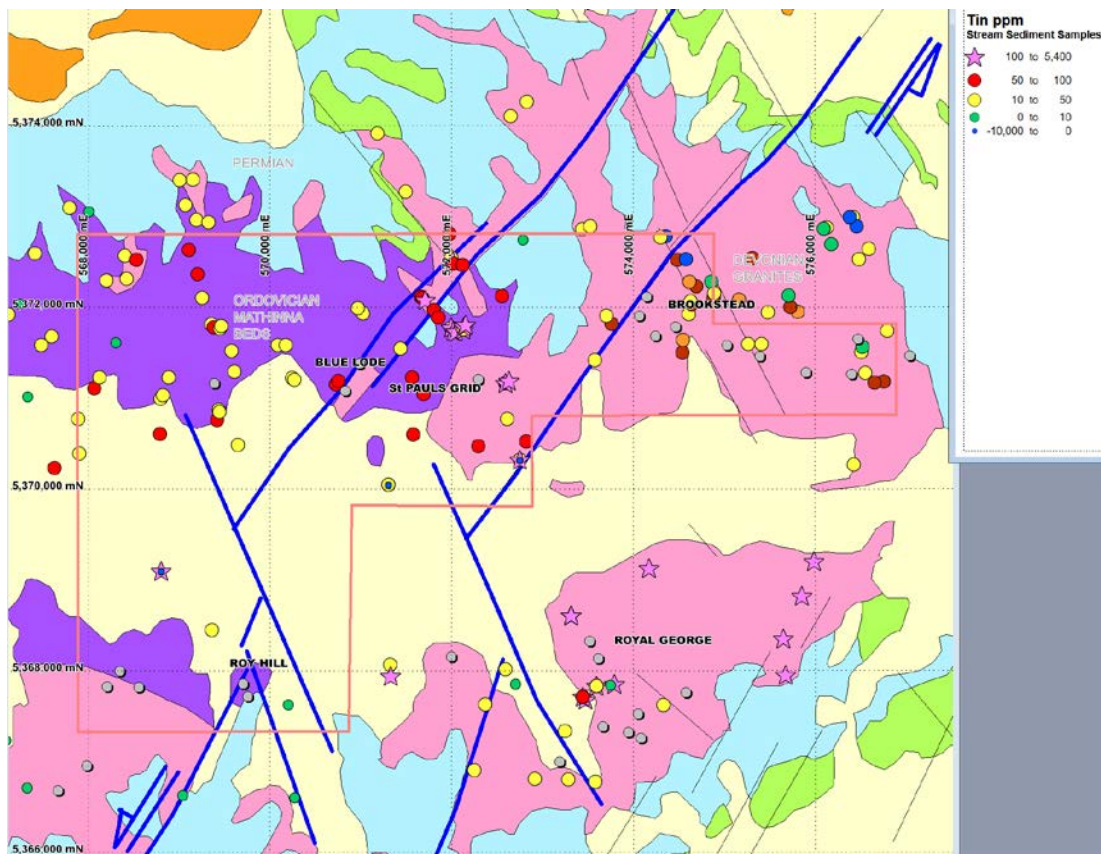
While every care has been taken in the preparation of this document, no warranty is given as to the correctness of the information and no liability is accepted for any statement or opinion or for any error or omission. The information is presented in good faith and is derived from sources believed to be reliable and accurate, and is provided on the basis that readers will be responsible for making their own assessment of the information and that they should verify all relevant representations, statements and information. Consequently Paul Askins will not be responsible or liable for any loss or damage caused arising from the use or reliance on the information, data or advice.



Quality innovative exploration targets

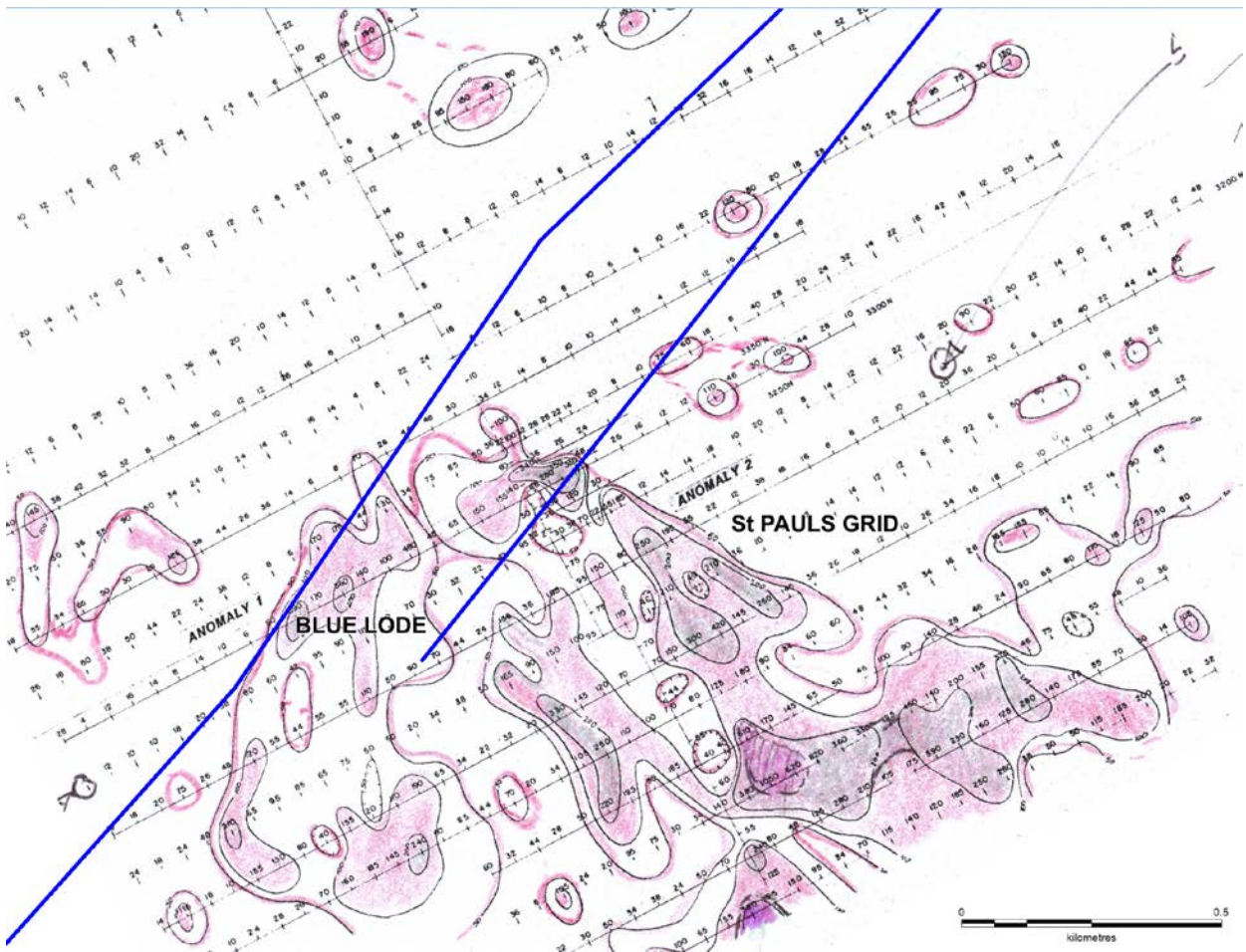


Known primary tin deposits (grey dots), on solid geology



Significant tin targets generated by stream sediment geochemistry

Quality innovative exploration targets



Very large tin mineralised system defined by tin (ppm) in soils. Almost untested.



Quality innovative exploration targets